

TECHNICAL SPECIFICATIONS



Mechanical requirements for advertisements

DPS
 Trim: (H) 285 x (W) 440mm
 Bleed: (H) 291 x (W) 446mm
 Text area: (H)255 x (W) 200mm

Single Page
 Trim: (H) 285 x (W) 220mm
 Bleed: (H) 291 x (W) 226mm
 Text area: (H)255 x (W) 200mm

qpmagazine.com | salonqp.com

Specifications

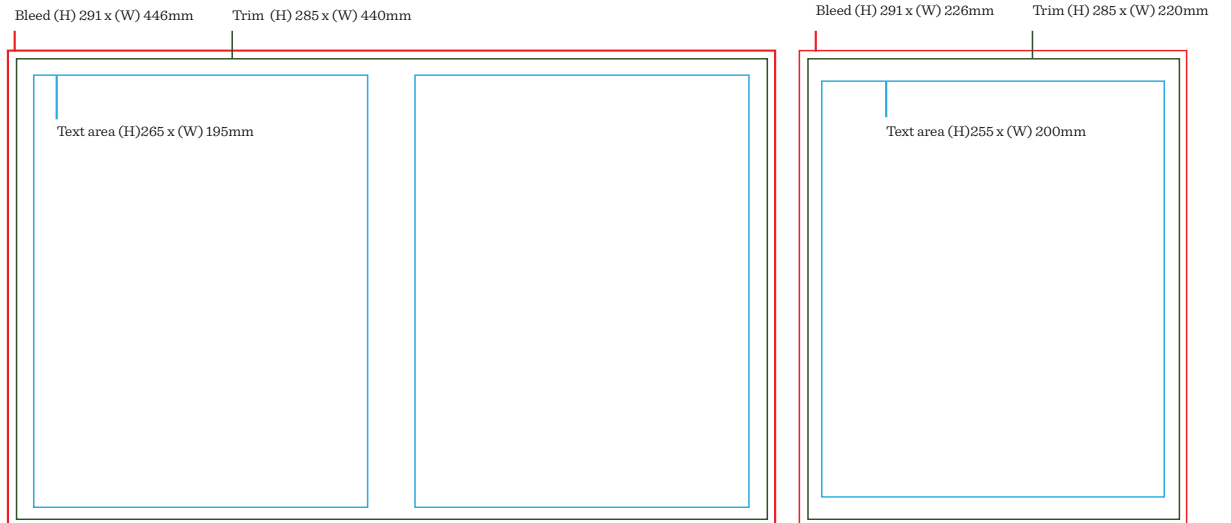
Printing and binding; Offset Litho CMYK; 96pp perfect bound.

All artwork must be provided at 300dpi and in CMYK (this also accounts for all included images). Artwork must be flattened with all fonts outlined and images embedded.

Our preferred format for receiving advertising files is PDF, however other formats such as TIFF, EPS, JPG can be accommodated, subject to prior consultation.

Delivery

Artwork can be supplied on CD/DVD, by email or via FTP (the FTP password is regularly changed to ensure security but username and password will be supplied on request).



Additional advertising formats

Half page landscape: (H) 140 x (W) 220mm | Half page portrait: (H) 285 x (W) 102mm